

Autodesk Official Training Guide

Essentials

AutoCAD®

2010

Learning AutoCAD® 2010, Volume 1

Using hands-on exercises, learn the features, commands, and techniques for creating, editing, and printing drawings with AutoCAD® 2010 and AutoCAD LT® 2010 software.

© 2009 Autodesk, Inc. All rights reserved.

Except as otherwise permitted by Autodesk, Inc., this publication, or parts thereof, may not be reproduced in any form, by any method, for any purpose.

Certain materials included in this publication are reprinted with the permission of the copyright holder.

Trademarks

The following are registered trademarks or trademarks of Autodesk, Inc., in the USA and other countries: 3DEC (design/logo), 3December, 3December.com, 3ds Max, ADI, Alias, Alias (swirl design/logo), AliasStudio, Alias|Wavefront (design/logo), ATC, AUGI, AutoCAD, AutoCAD Learning Assistance, AutoCAD LT, AutoCAD Simulator, AutoCAD SQL Extension, AutoCAD SQL Interface, Autodesk, Autodesk Envision, Autodesk Insight, Autodesk Intent, Autodesk Inventor, Autodesk Map, Autodesk MapGuide, Autodesk Streamline, AutoLISP, AutoSnap, AutoSketch, AutoTrack, Backdraft, Built with ObjectARX (logo), Burn, Buzzsaw, CAICE, Can You Imagine, Character Studio, Cinestream, Civil 3D, Cleaner, Cleaner Central, ClearScale, Colour Warper, Combustion, Communication Specification, Constructware, Content Explorer, Create>what's>Next> (design/logo), Dancing Baby (image), DesignCenter, Design Doctor, Designer's Toolkit, DesignKids, DesignProf, DesignServer, DesignStudio, Design|Studio (design/logo), Design Web Format, Discreet, DWF, DWG, DWG (logo), DWG Extreme, DWG TrueConvert, DWG TrueView, DXF, Ecotect, Exposure, Extending the Design Team, Face Robot, FBX, Filmbox, Fire, Flame, Flint, FMDesktop, Freewheel, Frost, GDX Driver, Gmax, Green Building Studio, Heads-up Design, Heidi, HumanIK, IDEA Server, i-drop, ImageModeler, iMOUT, Incinerator, Inferno, Inventor, Inventor LT, Kaydara, Kaydara (design/logo), Kynapse, Kynogon, LandXplorer, LocationLogic, Lustre, Matchmover, Maya, Mechanical Desktop, Moonbox, MotionBuilder, Movimento, Mudbox, NavisWorks, ObjectARX, ObjectDBX, Open Reality, Opticore, Opticore Opus, PolarSnap, PortfolioWall, Powered with Autodesk Technology, Productstream, ProjectPoint, ProMaterials, RasterDWG, Reactor, RealDWG, Real-time Roto, REALVIZ, Recognize, Render Queue, Retimer, Reveal, Revit, Showcase, ShowMotion, SketchBook, Smoke, Softimage, Softimage|XSI (design/logo), SteeringWheels, Stitcher, Stone, StudioTools, Topobase, Toxik, TrustedDWG, ViewCube, Visual, Visual Construction, Visual Drainage, Visual Landscape, Visual Survey, Visual Toolbox, Visual LISP, Voice Reality, Volo, Vtour, Wire, Wiretap, WiretapCentral, XSI, and XSI (design/logo).

The following are registered trademarks or trademarks of Autodesk Canada Co. in the USA and/or Canada and other countries: Backburner, Multi-Master Editing, River, and Sparks.

The following are registered trademarks or trademarks of Moldflow Corp. in the USA and/or other countries: Moldflow MPA, MPA (design/logo), Moldflow Plastics Advisers, MPI, MPI (design/logo), Moldflow Plastics Insight, MPX, MPX (design/logo), Moldflow Plastics Xpert.

All other brand names, product names, or trademarks belong to their respective holders.

Disclaimer

THIS PUBLICATION AND THE INFORMATION CONTAINED HEREIN IS MADE AVAILABLE BY AUTODESK, INC. "AS IS." AUTODESK, INC. DISCLAIMS ALL WARRANTIES, EITHER EXPRESS OR IMPLIED, INCLUDING BUT NOT LIMITED TO ANY IMPLIED WARRANTIES OF MERCHANTABILITY OR FITNESS FOR A PARTICULAR PURPOSE REGARDING THESE MATERIALS.

Published by:
Autodesk, Inc.
111 McInnis Parkway
San Rafael, CA 94903, USA

Contents

Introduction	ix
Chapter 1: Taking the AutoCAD Tour	1
Lesson: Navigating the Working Environment	2
Setting the Workspace	3
Keyboard Input	7
User Interface Layout	8
About Shortcut Menus	14
More AutoCAD-Specific Interface Tools	15
Lesson: Working with Files	22
Working with Files	22
Lesson: Displaying Objects	26
Display Tools	27
Pan	27
Zoom Realtime	30
Zoom Command Options	32
Wheel Mouse Features	34
Regen	35
Exercise: Zoom and Pan in the Drawing	36
Exercise: Hands-On Tour	38
Chapter Summary	41
Chapter 2: Creating Basic Drawings	43
Lesson: Inputting Data	45
About the Command Line	46
About the Coordinate System	47
About Dynamic Input	50
Using the Dynamic Input Interface	53
Using Direct Distance Entry	58
Exercise: Input Data	62

Lesson: Creating Basic Objects	65
Line Command	66
Circle Command	69
Arc Command	73
Erase Command	76
Undo and Redo Commands	79
Rectangle Command	84
Polygon Command	87
Exercise: Create Basic Objects	91
Lesson: Using Object Snaps	98
About Object Snap	99
Object Snaps	100
Using Object Snap	108
Exercise: Use Object Snaps	114
Lesson: Using Polar Tracking and PolarSnap	117
Using Polar Tracking and PolarSnap	118
Exercise: Use Polar Tracking and PolarSnap	125
Lesson: Using Object Snap Tracking	128
About Object Snap Tracking	129
Using Object Snap Tracking	130
Exercise: Use Object Snap Tracking	136
Lesson: Working with Units	139
About Units	140
Setting Units	141
Exercise: Use Architectural Units	145
Exercise: Use Surveyor's Units	148
Challenge Exercise: Architectural	150
Challenge Exercise: Mechanical	154
Chapter Summary	156
Chapter 3: Manipulating Objects	157
Lesson: Selecting Objects in the Drawing	158
Using a Window to Select Objects	159
Object Selection with Grips	161
Select Objects Options	164
Exercise: Select Objects	173
Lesson: Changing an Object's Position	176
Moving Objects	177
Exercise: Move Objects	182
Lesson: Creating New Objects from Existing Objects	188
Copying Objects	189
Exercise: Copy Objects	194
Lesson: Changing the Angle of an Object's Position	196
Rotating Objects	197
Exercise: Rotate Objects	202

Lesson: Creating a Mirror Image of Existing Objects	205
Mirroring Objects	206
Exercise: Mirror Objects in the Drawing	212
Lesson: Creating Object Patterns	214
Creating an Array of Objects	215
Exercise: Array Objects in the Drawing	223
Lesson: Changing an Object's Size	228
Scaling Objects	229
Exercise: Scale Objects Using the Copy Option	234
Challenge Exercise: Grips	236
Challenge Exercise: Architectural	243
Challenge Exercise: Mechanical	248
Chapter Summary	251
Chapter 4: Drawing Organization and Inquiry Commands	253
Lesson: Using Layers	255
Organizing Objects with Layers	256
Default Layer	258
Layer Tools	259
Exercise: Work with Layers	268
Lesson: Changing Object Properties	273
About Object Properties	274
ByLayer Property	277
Changing Object Properties	279
Exercise: Change Object Properties	288
Lesson: Quick Properties	291
About Quick Properties	292
Using Quick Properties	294
Exercise: Use Quick Properties	295
Lesson: Matching Object Properties	297
Matching an Object's Properties	298
Exercise: Match Object Properties	302
Lesson: Using the Properties Palette	306
Using the Properties Palette	307
Exercise: Manipulate Object Properties	310
Lesson: Using Linetypes	313
About Linetypes	314
Adding Linetypes to Your Drawing	316
Exercise: Use Linetypes	324
Lesson: Using Inquiry Commands	332
About Measuring	333
Using Measure Tools	334
Obtaining Object Information	344
Exercise: Obtain Geometric Information	347
Exercise: Measure Objects	350

Challenge Exercise: Architectural	354
Challenge Exercise: Mechanical	356
Chapter Summary	358
Chapter 5: Altering Objects	359
Lesson: Trimming and Extending Objects to Defined Boundaries	360
Using the Trim and Extend Commands	361
Exercise: Trim and Extend Objects	370
Lesson: Creating Parallel and Offset Geometry	373
Offsetting Objects	374
Exercise: Create Parallel and Offset Geometry	381
Lesson: Joining Objects	385
Joining Objects	386
Exercise: Join Objects	391
Lesson: Breaking an Object into Two Objects	393
Breaking Objects	394
Exercise: Break Objects	401
Lesson: Applying a Radius Corner to Two Objects	404
Creating Fillets	405
Exercise: Create a Filleted Corner	410
Lesson: Creating an Angled Corner Between Two Objects	413
Creating Chamfers	414
Exercise: Create a Chamfered Corner	419
Lesson: Changing Part of an Object's Shape	422
Stretching Objects	423
Exercise: Stretch Objects	429
Challenge Exercise: Architectural	433
Challenge Exercise: Mechanical	439
Chapter Summary	445

Contents

Chapter 6: Working with Layouts	1
Lesson: Using Layouts	2
About Layouts	3
Creating a New Layout	4
Exercise: Create Layouts	8
Lesson: Using Viewports	11
Creating Rectangular Viewports	12
Setting Viewport Scale Factor	17
Manipulating Viewports	23
Rotating Viewports	30
Exercise: Create and Manipulate Viewports	32
Challenge Exercise: Architectural	35
Challenge Exercise: Mechanical	38
Chapter Summary	40
 Chapter 7: Annotating the Drawing	 41
Lesson: Creating Multiline Text	42
About Multiline Text	43
Creating Multiline Text	45
MText Columns and Grips	50
Exercise: Create Multiline Text	52
Lesson: Creating Single Line Text	56
About Single Line Text	57
Creating Single Line Text	59
Exercise: Create Single Line Text	63
Lesson: Editing Text	66
Editing Text	67
Exercise: Edit Text	71
Lesson: Using Text Styles	73
Text Styles	74
Creating and Using Text Styles	75
Exercise: Use Text Styles	80
Challenge Exercise: Architectural	82
Challenge Exercise: Mechanical	86
Chapter Summary	89

Chapter 8: Dimensioning	91
Lesson: Creating Dimensions	92
Creating Dimensions on Linear Objects	93
Creating Dimensions on Curved Objects	105
Enhancing Dimensions	117
Exercise: Create Dimensions	128
Lesson: Using Dimension Styles	132
About Dimension Styles	133
Creating and Modifying Dimension Styles	134
Exercise: Modify a Dimension Style	145
Lesson: Using Multileaders	148
About Multileaders	149
About Multileader Styles	151
Using Multileaders	154
Exercise: Use Multileaders	158
Lesson: Editing Dimensions	163
Editing Dimensions	164
Exercise: Edit Dimensions	169
Challenge Exercise: Architectural	172
Challenge Exercise: Mechanical	175
Chapter Summary	178
 Chapter 9: Hatching Objects	 179
Lesson: Hatching Objects	180
Introduction to Hatch Patterns and Gradient Fills	181
Associative Hatch Patterns	183
Creating Hatched Objects	184
Exercise: Create Hatches	197
Exercise: Create Fills and Gradients	200
Lesson: Editing Hatch Objects	204
Maintaining Associative Properties when Editing Hatches	205
Editing Hatches	205
Exercise: Edit Hatch Patterns and Fills	209
Challenge Exercise: Architectural	212
Challenge Exercise: Mechanical	214
Chapter Summary	217
 Chapter 10: Working with Reusable Content	 219
Lesson: Using Blocks	220
About Blocks	221
How Blocks Behave	224
Creating Blocks	226
Inserting Blocks	232
Exercise: Create and Insert Blocks	238
Lesson: Working with DesignCenter	241
Using DesignCenter	242
Exercise: Use DesignCenter	245

Lesson: Using Tool Palettes	247
Using Tool Palette Tools	248
Exercise: Add Content from Tool Palettes	250
Challenge Exercise: Architectural	252
Challenge Exercise: Mechanical	255
Chapter Summary	257
Chapter 11: Creating Additional Drawing Objects	259
Lesson: Working with Polylines	260
About Polylines	261
Creating Polylines	262
Editing Polylines	264
Exercise: Create and Modify Polylines	268
Lesson: Creating Splines	271
About Splines	272
Creating Splines	274
Exercise: Create a Spline	280
Lesson: Creating Ellipses	282
About Ellipses	283
Creating Ellipses	284
Exercise: Create Ellipses	288
Lesson: Using Tables	290
About Tables	291
Creating Table Styles	293
Creating Tables and Entering Table Data	297
Exercise: Create a Dimension Table	302
Challenge Exercise: Architectural	306
Challenge Exercise: Mechanical	312
Chapter Summary	314
Chapter 12: Plotting Your Drawings	315
Lesson: Using Page Setups	316
Applying Page Setups to Layouts	317
Creating Page Setups	322
Exercise: Create and Activate Page Setups	325
Lesson: Plotting Drawings	327
About Plotting Environments	328
Plotting from Model Space	330
Plotting from Layouts	333
Plot Command	336
Preview Command	341
Exercise: Plot a Drawing	343
Chapter Summary	345

Chapter 13: Creating Drawing Templates	347
Lesson: Creating Drawing Templates	348
About Drawing Templates	349
Drawing Template Options	350
Creating Drawing Templates	353
Exercise: Create a Drawing Template	354
Chapter Summary	358
Appendix	359

Acknowledgements

The Autodesk Learning team wishes to thank everyone who participated in the development of this project, with special acknowledgement to the authoring contributions and subject matter expertise of Ron Myers and CrWare, LP.

CrWare, LP began publishing courseware for Autodesk® Inventor® in 2001. Since that time, the company has grown to include full-time curriculum developers, subject matter experts, technical writers, and graphics specialists, each with a unique set of industry experiences and talents that enables CrWare to create content that is both accurate and relevant to meeting the learning needs of its readers and customers.

The company's Founder and General Partner, Ron Myers, has been using Autodesk® products since 1989. During that time, Ron Myers worked in all disciplines of drafting and design, until 1996 when he began a career as an Applications Engineer, Instructor, and Author. Ron Myers has been creating courseware and other training material for Autodesk since 1996 and has written and created training material for AutoCAD®, Autodesk Inventor, AutoCAD® Mechanical, Mechanical Desktop®, and Autodesk® Impression.

Introduction

Welcome to the *Learning AutoCAD 2010 and AutoCAD LT 2010* Autodesk Official Training Guide, a training guide for use in Authorized Training Center (ATC®) locations, corporate training settings, and other classroom settings.

Although this guide is designed for instructor-led courses, you can also use it for self-paced learning. The guide encourages self-learning through the use of the AutoCAD® or AutoCAD LT® Help system.

This introduction covers the following topics:

- Course objectives
- Prerequisites
- Using this guide
- Default installation
- CD contents
- Completing the exercises
- Settings for the exercises
- Installing the exercise data files from the CD
- Imperial and metric datasets
- Notes, tips, and warnings
- Feedback

This guide is complementary to the software documentation. For detailed explanations of features and functionality, refer to the Help in the software.

Course Objectives

After completing this course, you will be able to:

- Navigate the interface, open and close files, and use the Zoom commands to adjust the display of objects on the screen.
- Describe units, function keys, and coordinate systems and create basic objects, using different data input techniques, object snaps, object snap tracking, polar tracking, and PolarSnap.
- Select, modify, and adjust the properties of objects using object grips and the Move, Copy, Rotate, Mirror, and Array commands.
- Create and manage layers and linetypes and obtain geometric information from objects in the drawing.
- Modify objects by changing their size, shape, orientation, or geometric composition using Trim, Extend, Offset, Join, and other commands.
- Create layouts, and create and manipulate viewports on the layouts.
- Create and edit annotation objects using multiline and single line text.
- Create, edit, and manage dimensions and dimension styles.

Enhance the drawing's visual appearance with hatch patterns and gradient fills.

Create blocks and reuse them in your drawings using the Insert command, DesignCenter, and tool palettes. Utilize the DesignCenter and tool palettes to insert and create other content in your drawings.

Create multiple segmented polyline objects, create the smooth curve objects of splines and ellipses, and add tables to your drawings.

Create and use page setups, and plot your designs from layouts and model space.

Use drawing templates to simplify the process of creating new drawings that contain all the required dimension styles, text styles, and layers that you would otherwise create manually, each time you create a new drawing.

Prerequisites

This guide is designed for the new user who needs to know the essential commands necessary for professional 2D drawing, design, and drafting using AutoCAD or AutoCAD LT. No previous computer-aided design (CAD) experience is required.

It is recommended that you have a working knowledge of:

- Microsoft® Windows® XP, or Microsoft® Vista®.

- Drafting and design experience is a plus.

Using This Guide

The lessons are independent of each other. However, it is recommended that you complete these lessons in the order that they are presented unless you are familiar with the concepts and functionality described in those lessons.

Each chapter contains:

- Lessons: Usually two or more lessons in each chapter.

- Exercises: Practical, real-world examples for you to practice using the functionality you have just learned. Each exercise contains step-by-step procedures and graphics to help you complete the exercise successfully.

Default Installation

The information in this guide is presented in such a way that it is assumed you have installed AutoCAD or AutoCAD LT using the default installation parameters. You should be using the *2D Drafting & Annotation* workspace as your active workspace throughout the course. You will learn how to do this in Chapter 1.

CD Contents

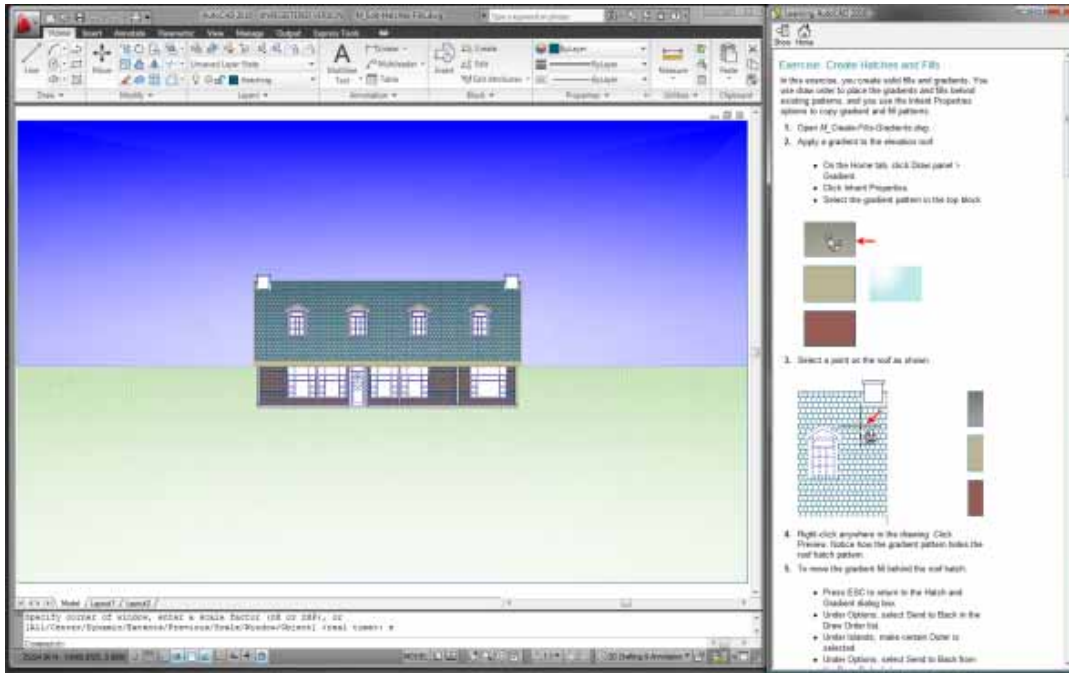
The CD attached to the back cover of this book contains all the data and drawings you need to complete the exercises in this guide.

Completing the Exercises

You can complete the exercise in two ways: using the book or the onscreen version.

Using the book: Follow the step-by-step exercises in the book.

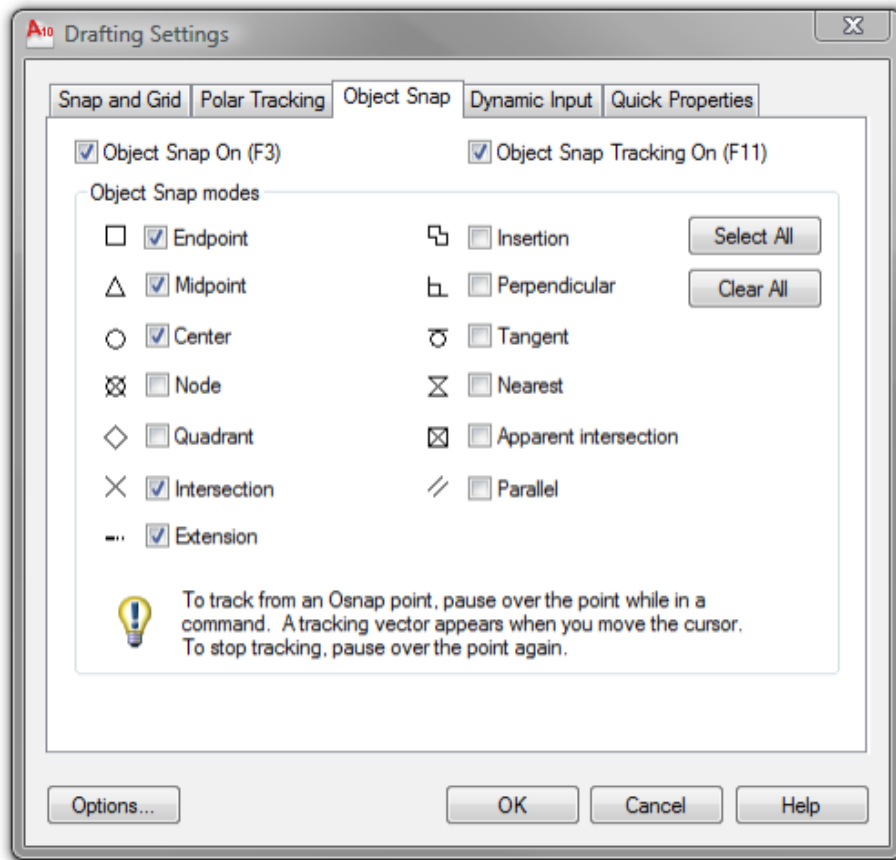
Onscreen: Click the Learning AutoCAD 2010 icon on your desktop, installed from the CD, and follow the step-by-step exercises on screen. The onscreen exercises are the same as those in the book. The onscreen version has the advantage that you can concentrate on the screen without having to glance down at your book.



After launching the on-screen exercises, you might need to alter the size of your application window to align both windows.

Settings for the Exercises

Each exercise is written with the assumption that the following Object Snap settings are active. You might need to confirm these settings for each exercise.



Each exercise is written with the assumption that the following Status Bar options are turned ON. If necessary adjust these options when you open the dataset for each exercise.



Installing the Exercise Data Files from the CD

To install the data files for the exercises:

1. Insert the CD.
2. Double-click the self-extracting archive *setup.exe*.

Unless you specify a different folder, the exercise files are installed in the following folder:

C:\Autodesk Learning\AutoCAD 2010\Learning AutoCAD 2010

After you install the data from the CD, this folder contains all the files necessary to complete each exercise in this guide.



The datasets and exercises can be used with AutoCAD LT. The location of the files will be the same whether you are using AutoCAD or AutoCAD LT. The name of the shortcut for the online version of the exercises is named Learning AutoCAD 2010, but can also be used with AutoCAD LT 2010.

Imperial and Metric Datasets

For some of the exercises that specify units of measurement, alternative exercise tables are provided. You will see a note stating that an imperial and metric version are available. An example of the file naming convention is as follows:

Open *i_stair_settings.dwg* (imperial) or *m_stair_settings.dwg* (metric).

In the exercise steps, you will see either the imperial or metric value as shown in the following example:

For Length, enter **13'2"**.

For Length, enter **4038** mm.

For exercises with no specific units of measurement, files are provided as shown in the following example:

Open *c_stair_settings.dwg* (common).

In the exercise steps, the unitless value is specified as shown in the following example:

For Length, enter **400**.

Notes, Tips, and Warnings

Throughout this guide, notes, tips, and warnings are called out for special attention.



Notes contain guidelines, constraints, and other explanatory information.



Tips provide information to enhance your productivity.



Warnings provide information about actions that might result in the loss of data, system failures, or other serious consequences.

Feedback

We always welcome feedback on Autodesk Official Training Guides. After completing this course, if you have suggestions for improvements or if you want to report an error in the book or on the CD, please send your comments to learningtools@autodesk.com.

